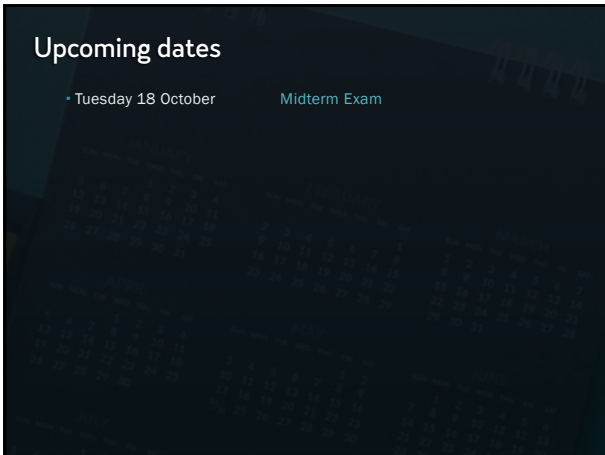
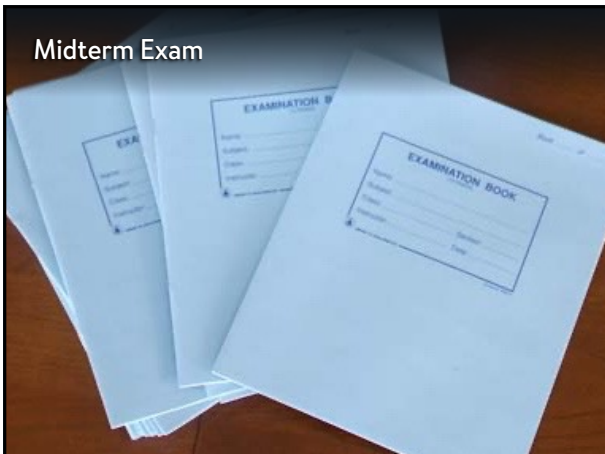




1



2



3

Kinds of Questions

- **Identification and Impact (5 or so)**
 - You'll be provided with a term and you'll need to give both (a) a description of what it refers to and (b) its significance or importance
 - All terms will come from the review sheet
 - **Multiple Choice (6)**
 - **Map**
 - Locate on a blank map important cities, peoples, and key geographic features
 - **Short Answer (2)**
 - A couple of paragraphs on a topic we've discussed with examples.
 - **Essay (1)**
 - Your interpretation and analysis of a major theme we've covered
 - You'll be asked to give an opinion and support it with evidence in the form of examples from three societies we've studied
- For each section except Multiple Choice, you will have at least twice as many choices as you need.

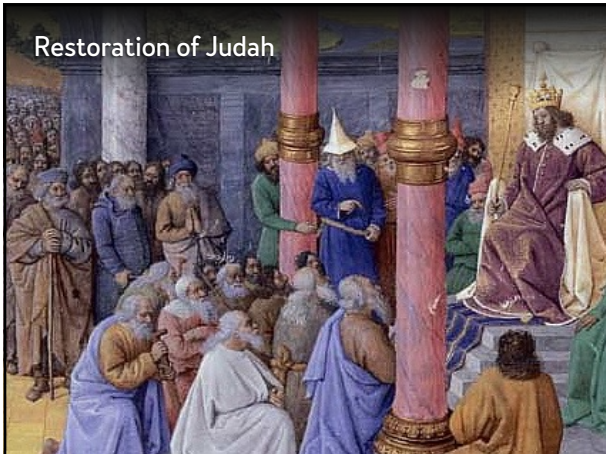
4

Approach to Preparing

- All readings are fair game
- Use resources on the website—quiz notes, slides, and videos
- Look for milestone events in the periods we've discussed and bullet-point their causes and legacies
- "Why" and "how" questions don't have just one answer
- Try to anticipate possible essay questions
- Know centuries and eras for awareness of "before" and "after"

5

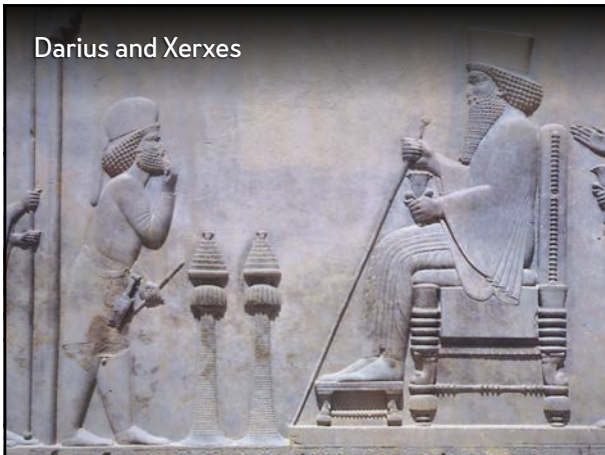
Restoration of Judah



6



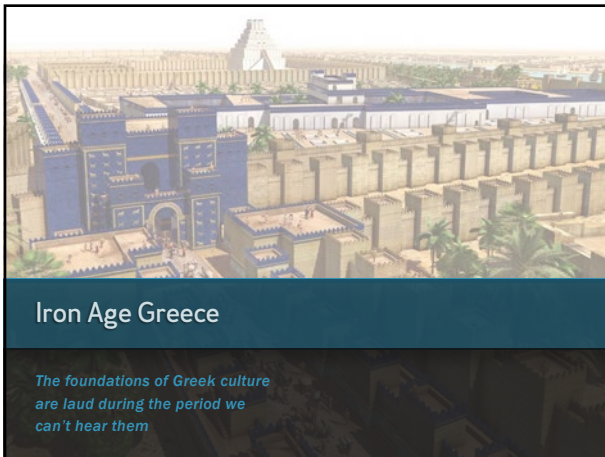
7



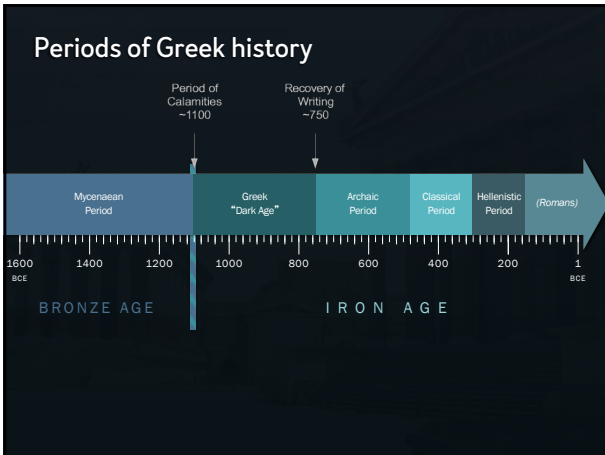
8



9



10



11

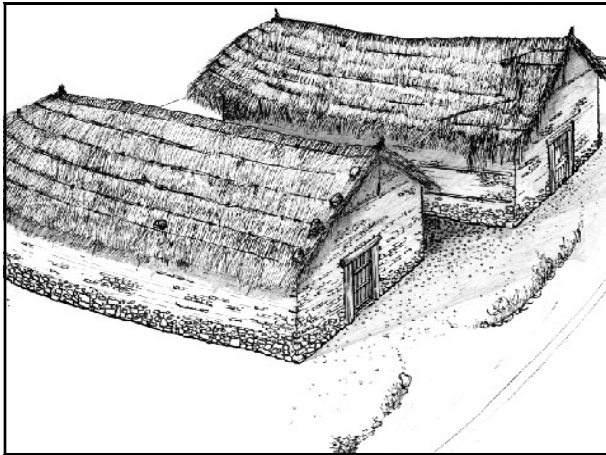


12

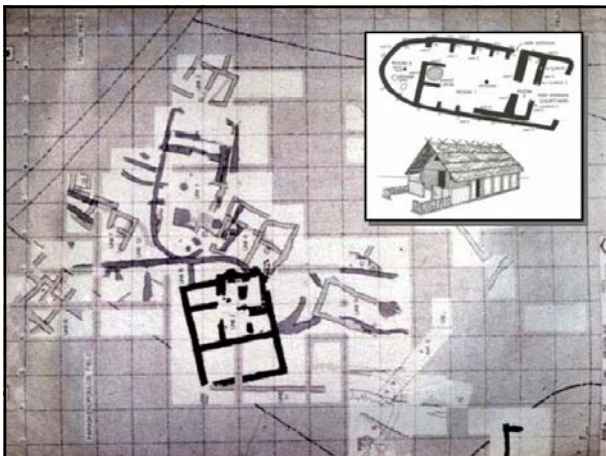
Transition to the Dark Age

- Decline
 - Collapse of palace economy and culture
 - Deconstruction of strict class structure
 - Depopulation and migration (Ionians and Dorians)
- Continuity
 - Rural everyday life
 - Religion
- Development
 - Ironworking
 - Protogeometric ceramics

13



14



15



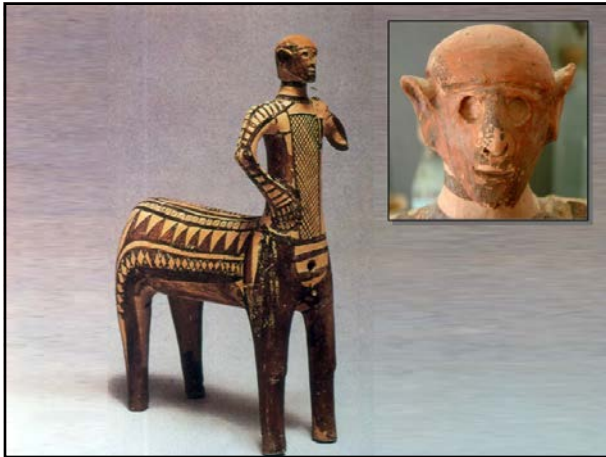
16



17



18

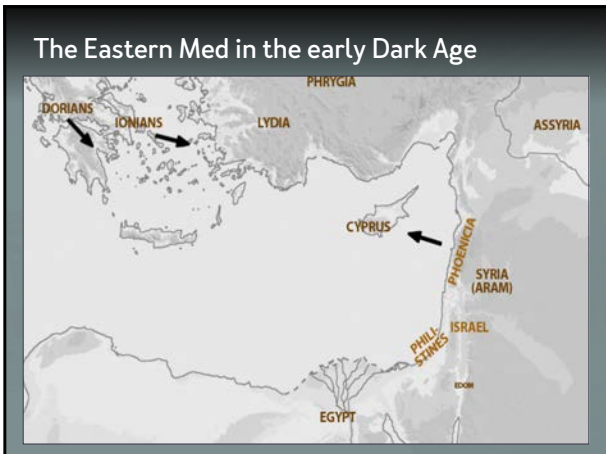


19

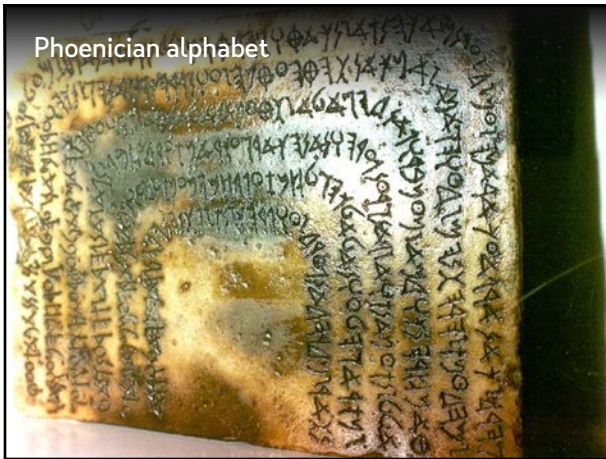
Dark Age development

- the arts, writing/literature
- shipbuilding and bulk commerce
- piracy
- military tactics
- the spread of iron
- the use of waterproof plaster
- winemaking; the use of the olive for food
- landholding
- chickens
- terraced agriculture
- the polis
- intercity athletic competition

20

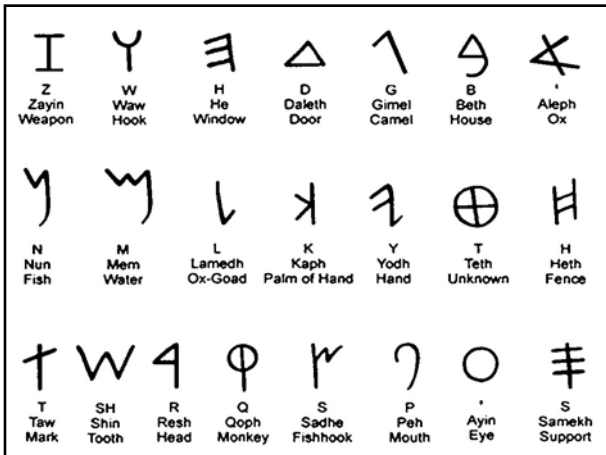


21



Phoenician alphabet

22



23



Greek alphabet

Dipylon inscription
ca. 740 BC

24

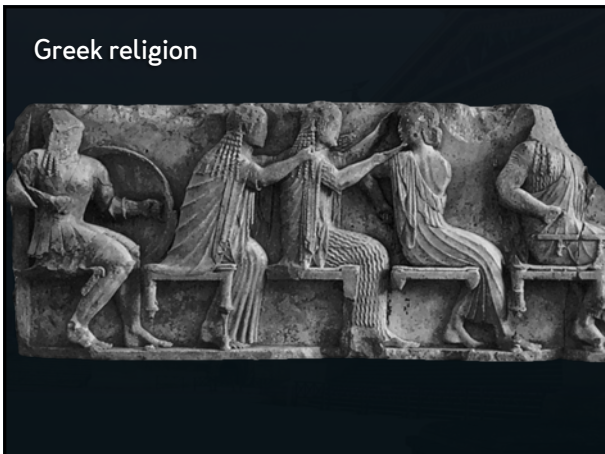
Σπυρινο	Αργινο	Ιωνικο	Κορινθιακο	Αρκαδιο	Λακωνικο	Χαλκιδιο	Κρητικο	Φοινικικο
A	A	A	A	A	A	A	A	𐤀
B	B	B	B	B	B	B	B	𐤁
Γ	Γ	Γ	Γ	Γ	Γ	Γ	Γ	𐤂
Δ	Δ	Δ	Δ	Δ	Δ	Δ	Δ	𐤃
E	E	E	E	E	E	E	E	𐤄
Z	→ I	→ I	→ I	→ I	→ I	→ I	→ I	𐤅
H	→ I	→ I	→ I	→ I	→ I	→ I	→ I	𐤆
Θ	→ I	→ I	→ I	→ I	→ I	→ I	→ I	𐤇
I	→ I	→ I	→ I	→ I	→ I	→ I	→ I	𐤈
K	K	K	K	K	K	K	K	𐤉
L	L	L	L	L	L	L	L	𐤊
M	M	M	M	M	M	M	M	𐤋
N	N	N	N	N	N	N	N	𐤌
Ξ	Ξ	Ξ	Ξ	Ξ	Ξ	Ξ	Ξ	𐤍
Ο	→ I	→ I	→ I	→ I	→ I	→ I	→ I	𐤎
Π	Π	Π	Π	Π	Π	Π	Π	𐤏
Ρ	Ρ	Ρ	Ρ	Ρ	Ρ	Ρ	Ρ	𐤐
Σ	Σ	Σ	Σ	Σ	Σ	Σ	Σ	𐤑
Τ	Τ	Τ	Τ	Τ	Τ	Τ	Τ	𐤒
Υ	Υ	Υ	Υ	Υ	Υ	Υ	Υ	𐤓
Φ	Φ	Φ	Φ	Φ	Φ	Φ	Φ	𐤔
Χ	Χ	Χ	Χ	Χ	Χ	Χ	Χ	𐤕
Ψ	→ I	→ I	→ I	→ I	→ I	→ I	→ I	𐤖
Ω	→ I	→ I	→ I	→ I	→ I	→ I	→ I	𐤗

25



The rhapsode

26



Greek religion

27



28

"Homeric society"

- Regional diversity of custom and tradition
- Emergence of 'hellenism'
- Contrasting idea of barbaroi
- Xenia — guest friendship
- Agonal society
 - Timē — honor and respect
 - Aretē — achievement of excellence

29

Dark Age political structure

wanax **ῥαναξ, ἀναξ**

- Mycenaean term for king
- Now used to mean high-king or overlord
 - Agamemnon (overlord of the Greeks at Troy)
 - Zeus (ruler of the gods)

basileus **βασιλεύς**

- Mycenaean term for mayor, headman
- Dark age (and later) term for king

"Big man" system – e.g., Ithaca

- Population gravitates toward local strongmen for stability and protection
- Authority is transient and personal

30

Foundations of Archaic Greece

Polis

Hoplite armies

Knowledge through creative expression

Epic poetry as the foundation for public religion

Colonization

Panhellenism

31



32