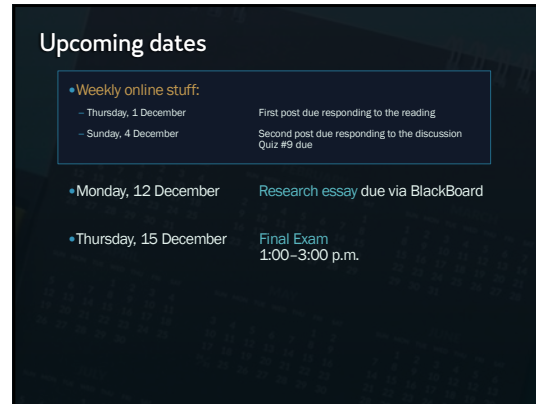


1



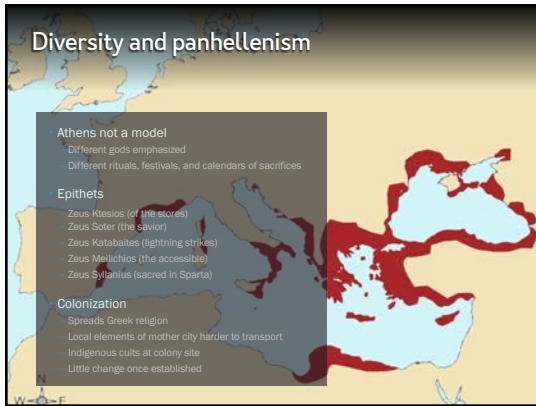
2



3

Diversity and panhellenism

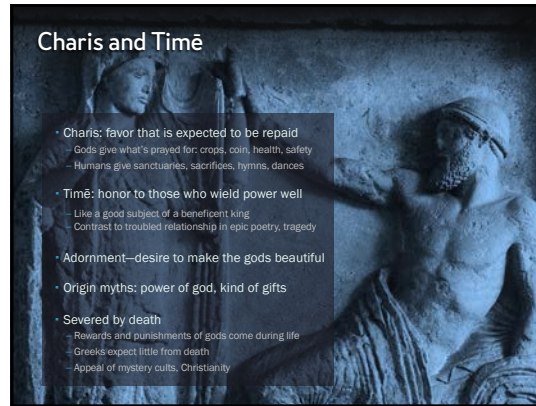
- Athens not a model**
 - Different gods emphasized
 - Different rituals, festivals, and calendars of sacrifices
- Epithets**
 - Zeus Ktesios (of the stores)
 - Zeus Soter (the savior)
 - Zeus Katabaites (lightning strikes)
 - Zeus Meilichios (the accessible)
 - Zeus Sylanios (sacred in Sparta)
- Colonization**
 - Spreads Greek religion
 - Local elements of mother city harder to transport
 - Indigenous cults at colony site
 - Little change once established



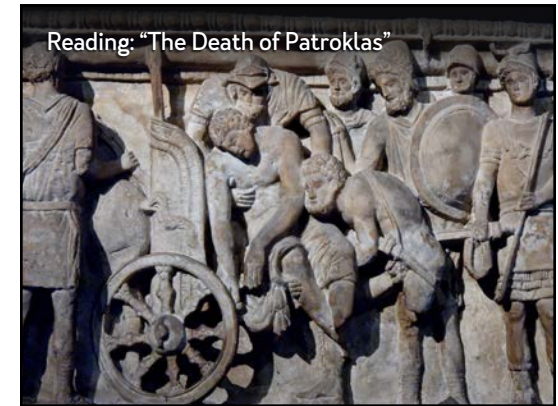
4

Charis and Timē

- Charis: favor that is expected to be repaid**
 - Gods give what's prayed for: crops, coin, health, safety
 - Humans give sanctuaries, sacrifices, hymns, dances
- Timē: honor to those who wield power well**
 - Like a good subject of a beneficent king
 - Contrast to troubled relationship in epic poetry, tragedy
- Adornment—desire to make the gods beautiful**
- Origin myths: power of god, kind of gifts**
- Severed by death**
 - Rewards and punishments of gods come during life
 - Greeks expect little from death
 - Appeal of mystery cults, Christianity



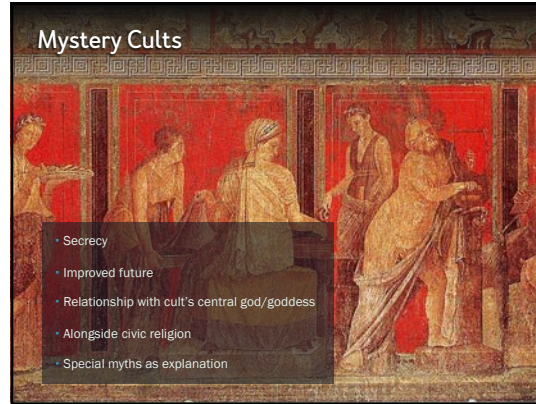
5



6



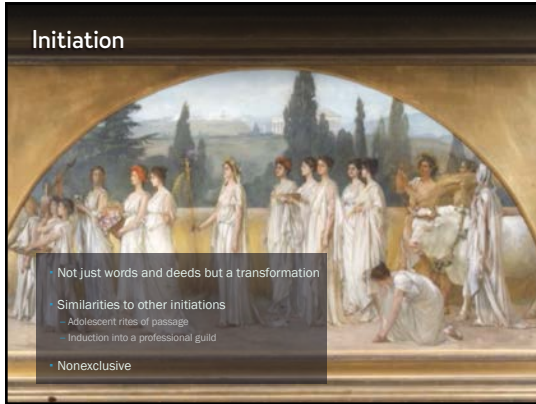
7



8



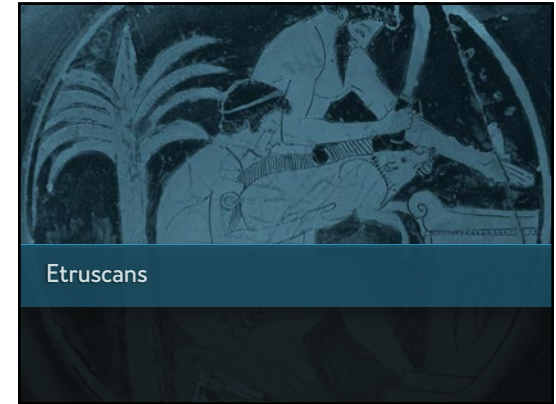
9



10



11



12



13



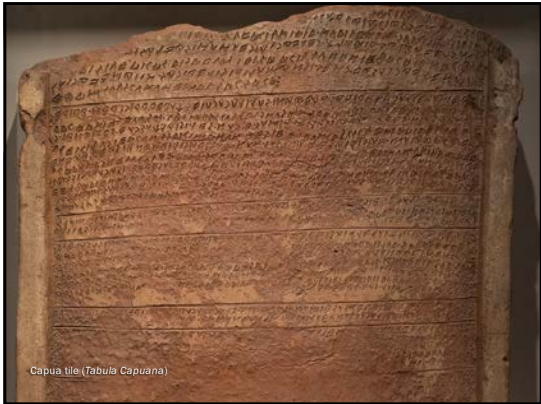
14



15



16



17



18



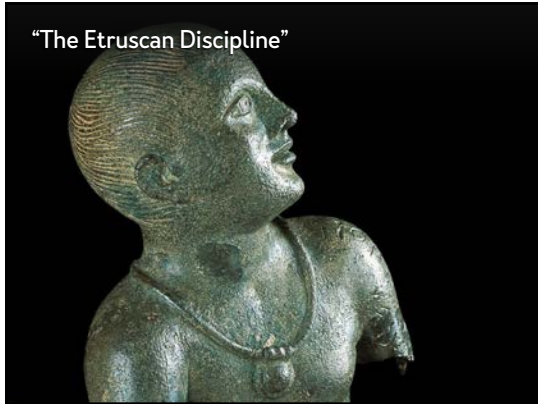
19



20



21



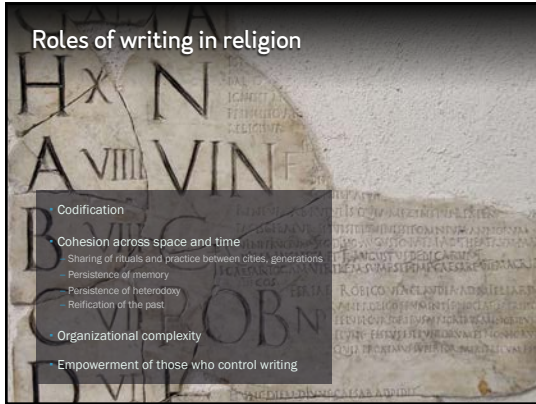
22



23



24



25



26



27



28

