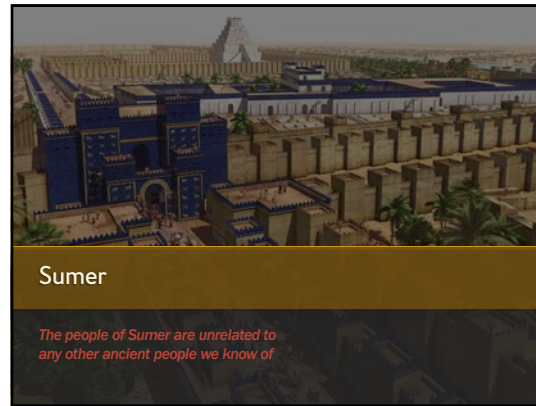
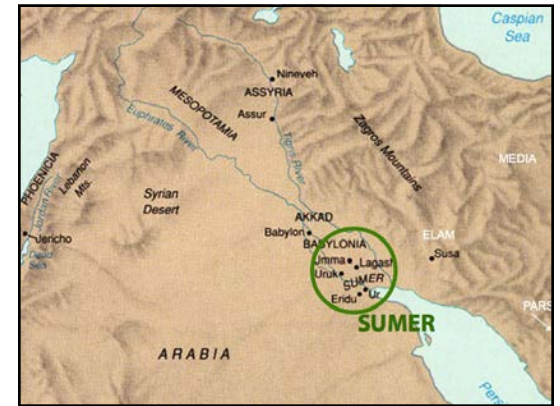


1



2



3



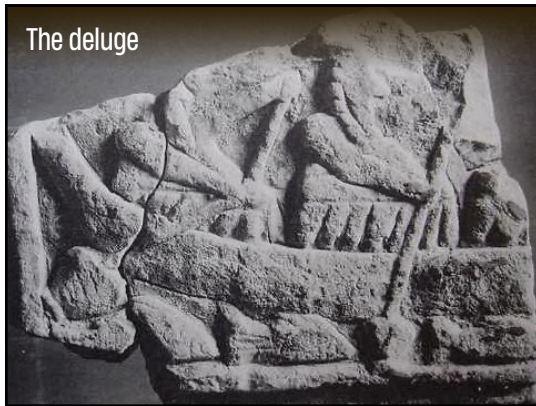
4



5



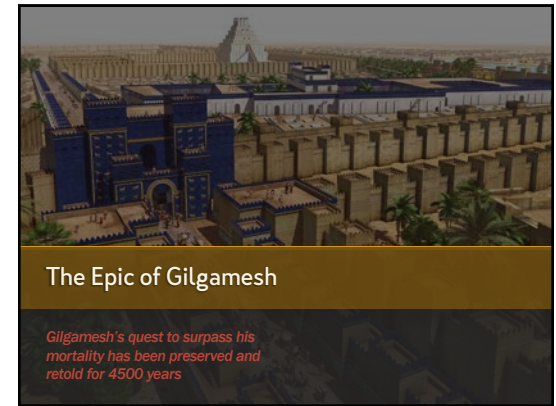
6



7



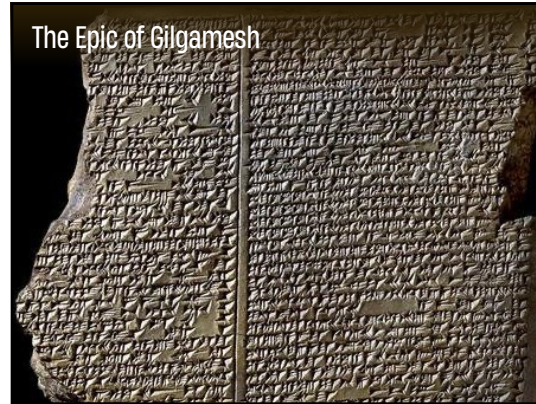
8



9



10



11



12

Ways of looking at the Epic

- Gilgamesh as a priest-king
- Gilgamesh as a mortal
- Gilgamesh as a man

13

Characters

Gilgamesh	king of Úruk
Ninsun	his divine mother
Enkidu	his friend
Shámhat	a prostitute in Úruk
Shámash	sun-god
Humbába	forest guardian
Íshtar	great goddess
Úta-napishti	survivor of the Flood

14

King Gilgamesh



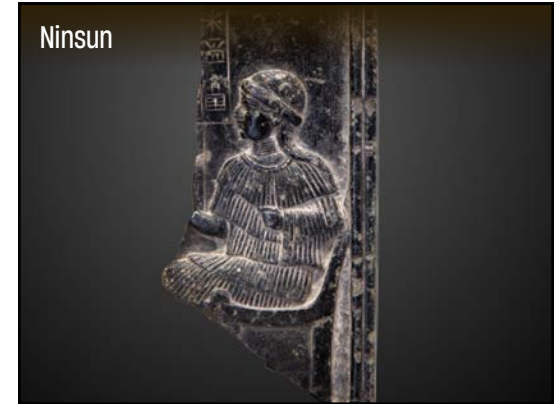
15



16



17



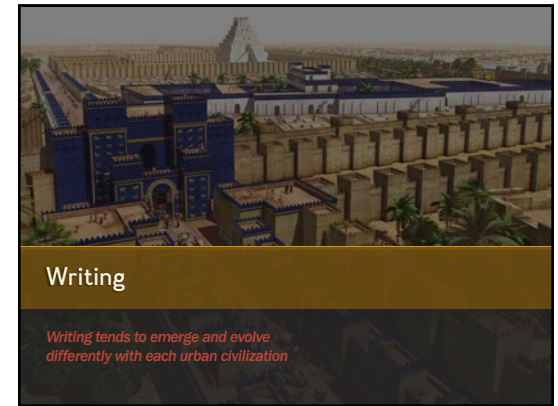
18



19



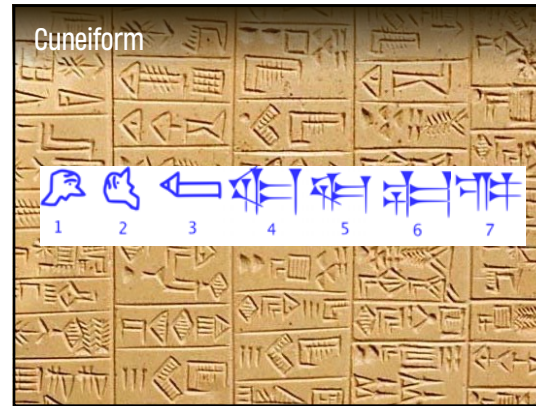
20



21



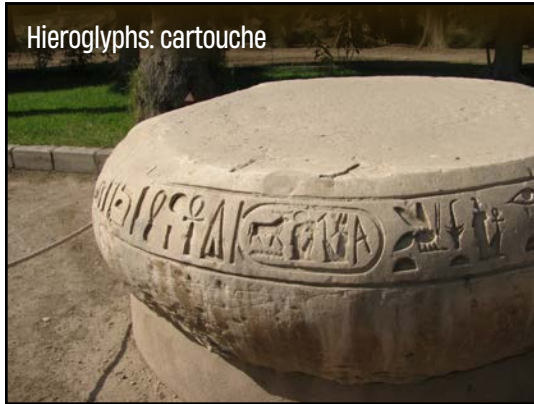
22



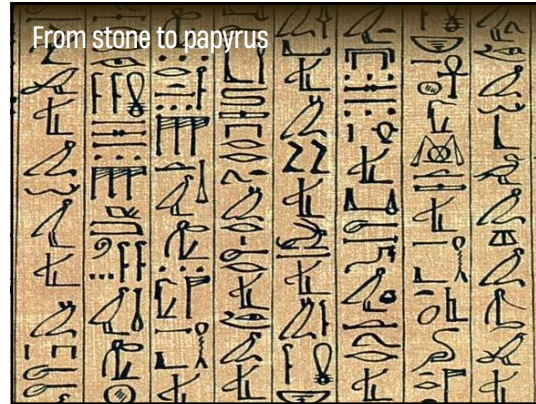
23



24



25



26



27
